



Explore Genetic Technology to
Improve the Quality of Life



Pluslife CRQ Card

One Nucleic Acid Test Card
Four Canine Pathogen Identification

CDV

CPIV

CAV-2

Bb



Pluslife CRQ Card

One Nucleic Acid Test Card
Four Canine Pathogen Identification



Pluslife Mini Dock is a rapid molecular diagnostic system that can be used to detect canine distemper virus (CDV), canine parainfluenza virus (CPIV), canine adenovirus type 2 (CAV-2), *Brodetella bronchiseptica* (Bb) in one single test. Our self-developed isothermal amplification technology, RHAM, provides excellent results comparable to qPCR tests. The product is compact and portable, with easy-to-operate procedure to obtain results within 35 minutes.

Features



FAST
TAT within **35** mins



EASY
Hand-on time within **2** mins



ACCURATE
LoD of **1000** copies/mL

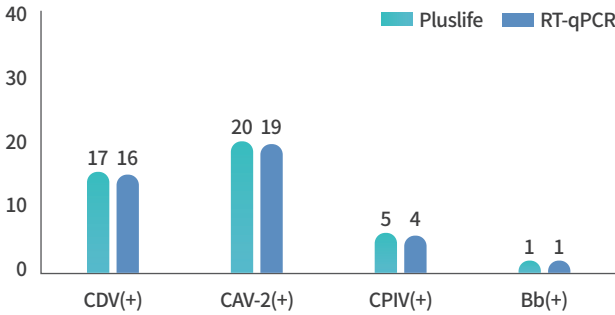


POWERFUL
perfect **4** pathogens in 1 test



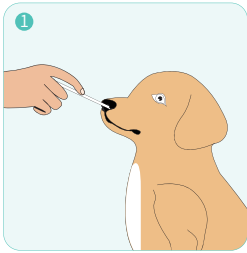
Clinical Proven

Results of Comparison

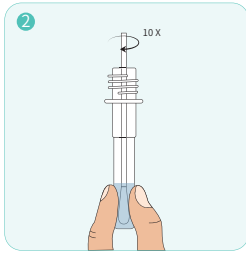


PPA
CDV: 100%
CAV-2: 94.7%
CPIV: 100%
Bb: 100%

Test Procedure



Collect Sample



Mix Sample

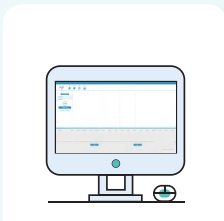


Run Test

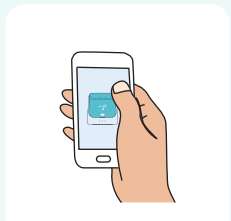
Result Output



✓ Mini Dock



✓ PC Software



✓ Mobile App

Application



Pet Hospital/Clinic

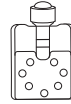
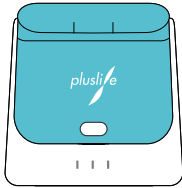


Pet Shop



Center for Animal Disease Control

Specification



Pluslife Mini Dock	
Dimension	101 x 91 x 65 mm
Weight	210 g
Connection	Mobile phone or computer app
Operate temperature	15°C–30°C
Operate humidity	≤80%

Pluslife CRQ Card	
Target pathogen	CDV, CPIV, CAV-2, Bb
Sample type	Eye/nasal/oropharyngeal swab
Limit of detection (LoD)	1000 copies/mL
Turnaround time (TAT)	35 mins
Shelf life	13 months at room temperature

Guangzhou Pluslife Biotech Co.,Ltd.

 Floor 3, Block E, Runhui Science & Technology Park, No.18 Shenzhou RD, Huangpu District, Guangzhou, Guangdong, China

 +86-20-31703986  market@pluslife.com  www.pluslife.com

